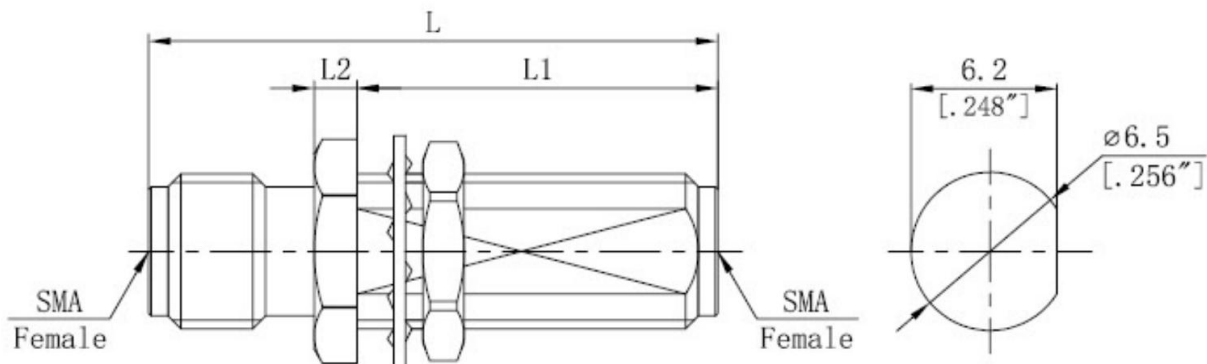


# 射频同轴转接器/ RF Coaxial Adapter

## XQY-SMA-KKY38TD

项目 Project	指标 Indicators
产品名称 Product Name	射频转接器/RF Adaptor
频率范围 Frequency Range	DC-18GHz
驻波比 VSWR	1.25:1 (max)
阻抗 Impedance	50 $\Omega$
插入损耗 Insertion Loss	0.30 dB (max)
介质耐电压 Dielectric withstand voltage	1000 V
使用寿命 Service life	$\geq 500$
绝缘电阻 Insulation Resistance	$\geq 5000M\Omega$
A 接头类型 A connector type	SMA-Female
B 接头类型 B connector type	SMA-Female
工作温度 Operation Temperature	-55°C ~ +165°C
内导体材质 Inner conductor material	铍青铜 镀金 White Bronze Gold Plating
外导体材质 External conductor material	黄铜 镀金 Brass Gold Plated
绝缘体 Insulator	PTFE



建议安装开孔尺寸  
Mounting Hole

型号	L	L1	L2
XQY-SMA-KKY25.8TD	25.8mm(1.015")	17.2mm(0.677)	1.8mm(0.070")
XQY-SMA-KKY18TD	18mm(0.708")	10.2mm(0.401)	1.9mm(0.074")
XQY-SMA-KKY38TD	38mm(1.496")	28.5mm(1.122")	1.9mm(0.074")

注: 尺寸(mm/[英寸]), 一般公差( $\pm 0.05$ )

Note: Dimensions (mm / [inch]), General tolerance ( $\pm 0.05$ )